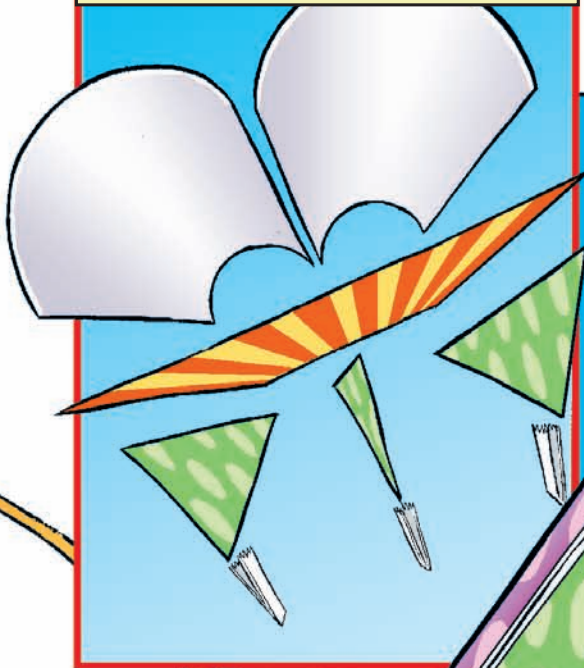
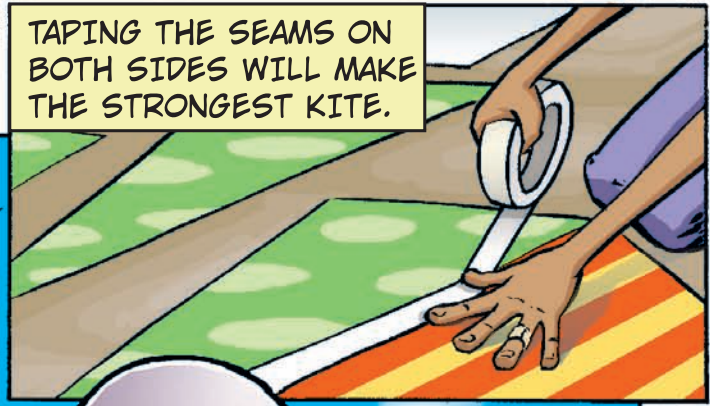


THIS IS HOW THE PIECES SHOULD BE ASSEMBLED.



TAPING THE SEAMS ON BOTH SIDES WILL MAKE THE STRONGEST KITE.



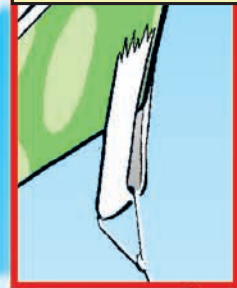
AIR TUBES

BASE

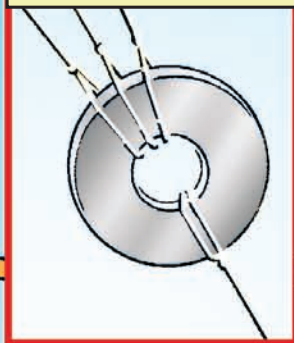
KEELS

ADD A TAIL FOR STABILITY!

TOW POINTS ARE MADE OF REINFORCED TYVEK TAPE.



A SIMPLE WASHER CAN BE USED TO CONNECT THE BRIDLE TO YOUR LINE.



LET THE STRING OUT SLOWLY AND SEE HOW HIGH YOU CAN FLY.



CREATED BY SAUL, INGRID, AND NICK!

HOWTOONS.COM

THE END!